

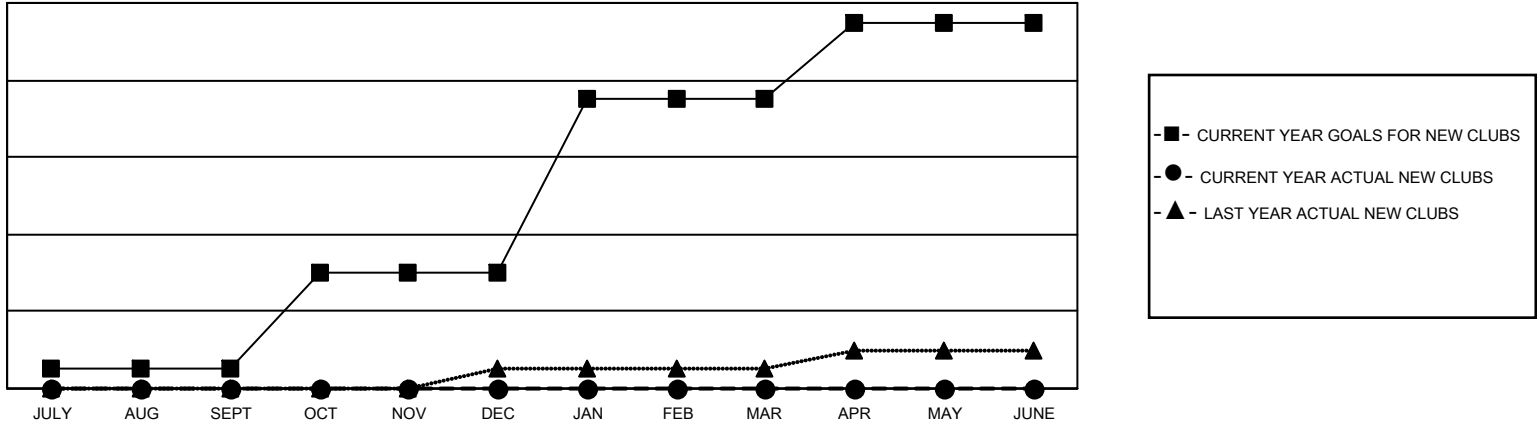


GMT: OPEN

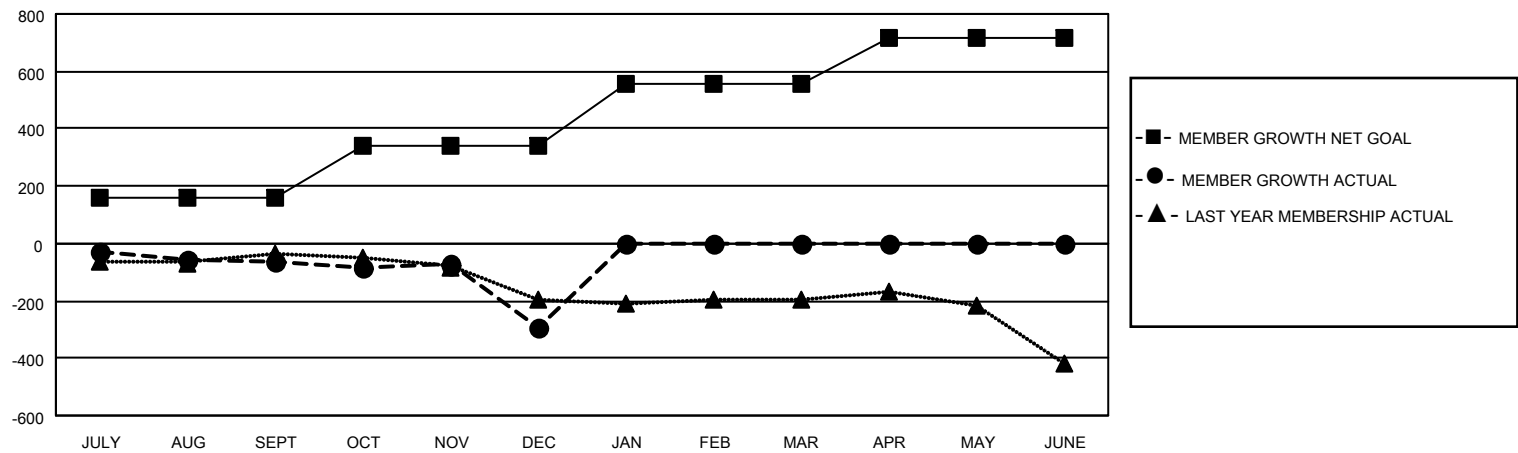
GMT CA 1

| Clubs | | | | Members | | | |
|-----------------------|---------------|-----------|---------------|-----------------------|------------------------|----------------------|--|
| RESULTS FOR 2024-2025 | | | | RESULTS FOR 2024-2025 | | | |
| QUARTER | NEW CLUB GOAL | NEW CLUBS | DROPPED CLUBS | QUARTER | MEMBER GROWTH NET GOAL | MEMBER GROWTH ACTUAL | DROPPED MEMBERS ACTUAL (including transfers) |
| JULY/AUG/SEPT | 1 | 0 | 3 | JULY/AUG/SEPT | 161 | 350 | 348 |
| OCT/NOV/DEC | 5 | 0 | 10 | OCT/NOV/DEC | 179 | 312 | 489 |
| JAN/FEB/MAR | 9 | 0 | 0 | JAN/FEB/MAR | 215 | 0 | 0 |
| APR/MAY/JUNE | 4 | 0 | 0 | APR/MAY/JUNE | 163 | 0 | 0 |

GOALS AND ACTUAL NEW CLUBS CUMULATIVE



GOALS AND ACTUAL MEMBERS CUMULATIVE



| | | | |
|-------------------|---|---------------------------------|-----------------|
| DROPPED CLUBS: 13 | 216 CLUBS OF 604 ADDED 1 OR MORE NEW MEMBERS | GENDER DISTRIBUTION | |
| | | MALE | 10,414 (67.33%) |
| | | FEMALE | 5,052 (32.67%) |
| DROPPED MEMBERS | CLICK HERE FOR CUMULATIVE MEMBERSHIP DATA | TOTAL FAMILY UNIT MEMBERS | |
| DECEASED | | 0 | |
| CLUB CANCELLED | | FAMILY MEMBERS PAYING HALF DUES | |
| OTHER | | 0 | |
| TOTAL | | | |
| 833 | | | |